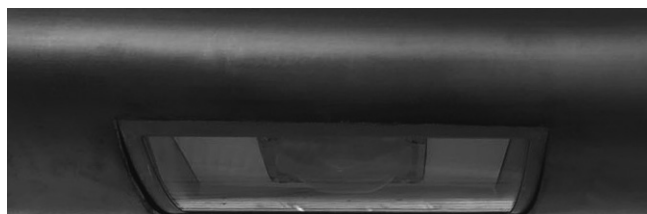


SEITO G

Installation and Operating Instructions

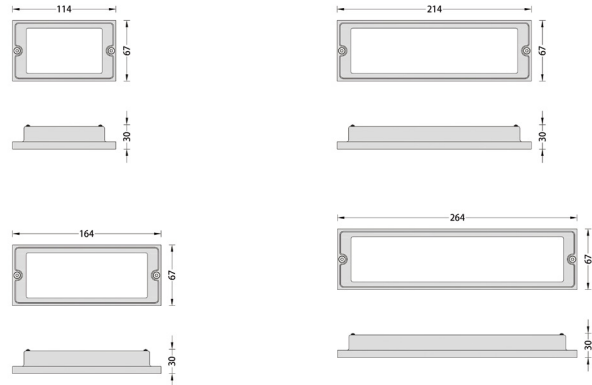
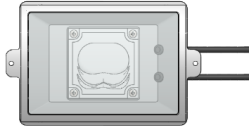
安 装 使 用 说 明

Version 2022.1



Floodlights / 投光灯

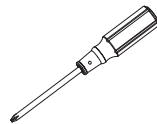
9 29x 06 xx Seito G



Important Information / 重要信息

1. The installation and maintenance of the product can only use the original parts, and the installation and operation of the equipment shall be subject to national and international regulations.
本产品安装和维护工作只能使用原厂配件，设备的安装和操作适用于国家和国际法规。
2. DMK is not liable for any damages resulting from improper or unskilled conduct.
DMK 不承担任何因不当或不熟练行为而造成的损害赔偿。
3. Only qualified installation personnel are allowed to assemble and install products obtained from the DMK.
只允许有安装资质的人员组装和安装从 DMK 获得的产品。
4. The contents of this manual are subject to change without prior notice. Please refer to the material in kind.
本说明书的内容如有变更，恕不另行通知。请以实物为准。
5. If in doubt, please contact the supplier.
如有疑问，请与供应商联系。

Toolings / 工具



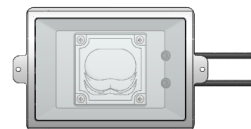
十字螺丝刀



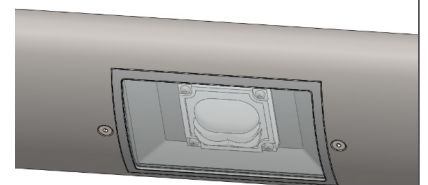
2.5 mm 内六角扳手

Recommended Installation Procedure / 推荐安装过程

1. Connect the power supply cable according to the drawing.
将扶手灯电源线与扶手内部线缆连接，具体接线见扶手灯接线图。

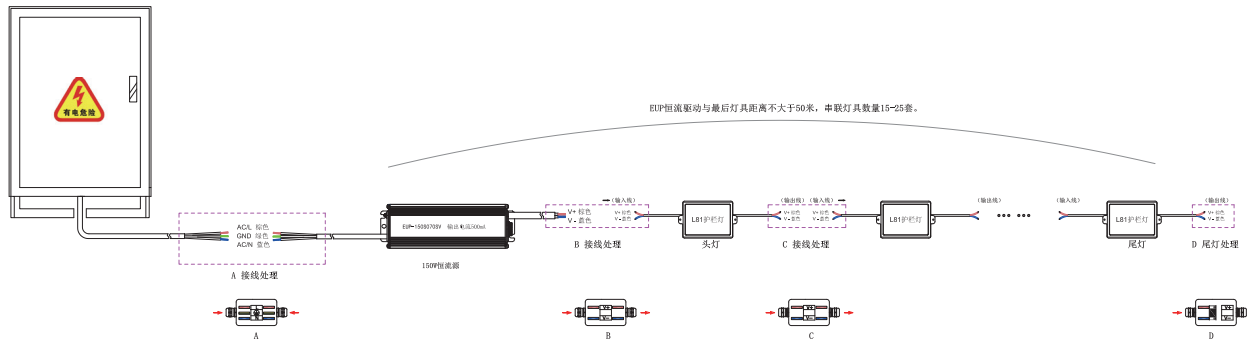


This step should be operated by professional personnel.
按下图所示连接灯具电源线。（此步骤需由专业人员操作）



Recommended Installation Procedure / 推荐安装过程

The wiring diagram / 扶手灯接线图



说明:

- 1). DS-EUC 026 constant current driver, the output current is 350mA. Each driver connected 15-23pcs fixtures. please contact the manufacturer if any other configuration.
驱动电源为 DS-EUC 026 恒流源, 输出电流 350mA。每套电源可连接灯具数量为 15-23 套。
如灯具数量不在数量范围之内, 需另配电源, 请与厂家联系。
- 2). A/B/C/D sections should be completed by professional personnel. The positive and negative poles should not be connected wrong. Wiring treatment or waterproof grade of junction box should reach IP65 or above.
A/B/C/D 灯具接线需专业电工完成, 注意正负极不可接错, 接线处理或接线盒防水等级达到 IP65 以上级别。
- 3). D section should put the positive and negative together and make them waterproof.
D 尾灯需要将灯具输出线正负极并线处理, 并做好防水。
- 4). Individual fixture failures do not affect others in the circuit. they will be lit normally. and the defective luminaire will light up the built-in failure LED lamp (6500K).
单个灯具如有故障, 不影响回路内其他灯具正常工作, 且其内置的故障灯 (6500K 白光) 亮起。



Please observe the input line and output line marks of the fixtures and connect the fixtures in the direction of power supply.
请注意观察灯具的输入线与输出线标志, 按电源供电方向接入灯具, 不可反接。

2. Adjust the fixtures to an appropriate Angle, put it into the handrail, and fix it with M4 hexagon concave cone hole screw.
扶手灯调至合适角度, 装入扶手, 采用 M4 六角凹头锥孔螺钉固定。



The surface of the fixture is flush with the handrail.
扶手灯表面与扶手齐平。

